

PVC-PVDF Valve Body, 1/2" – 2"



Advantages / Benefits

- ▶ **Fluid is hermetically isolated from the actuator by diaphragm**
- ▶ **Automatic self-adjustment of basic parameters**
- ▶ **Integrated PID controller**
- ▶ **User-friendly operation**
 - LCD display
 - Keypad interface
 - Easy-to-understand menu-guided programming
- ▶ **Code protection against unauthorized access**
- ▶ **CE certified**

Design

This proportional control system is a combination of a piston operated diaphragm valve with PVC or PVDF body and an electropneumatically operated Type 1067 positioner.

The positioner consists of three main parts: the valve stem position pickup, the electropneumatic control system and the microprocessor electronics. The valve stem position pickup, a linear potentiometer connected to the valve stem, feeds back the actual stem position to the positioner electronics.

The microprocessor electronics compares the actual stem position to the set point given by a standard signal (4-20mA, 0-10V,...). In the case of a position difference, the electropneumatic control system corrects the stem position until the set point is reached.

The Type 1067 positioner also features a built-in process controller for the control of flow, temperature, pressure, etc.

- Programmable flow curves:
 - linear
 - equal percentage
 - freely programmable
- No air consumption at steady-state conditions
- Excellent flow characteristics combined with high flow rates
- Integrated PID controller
- Captured exhaust air
- No tubing between positioner and Burkert control valves

Applications

Fluids

For contaminated and aggressive fluids up to 245°F

Applications

- Water treatment
- R/O Systems
- Process technology
- Semi-conductor industry
- Environmental technology
- Electro-plating
- Printed circuit board production

Burkert Contromatic USA
2602 McGaw Avenue
Irvine, CA 92614
Tel. 949.223.3100
Fax 949.223.3198
www.burkert-usa.com

Burkert Contromatic Inc.
760 Pacific Road, Unit 3
Oakville, Ontario, Canada
L6L 6M5
Tel. 905.847.5566
Fax 905.847.9006



Diaphragm Valve System for Proportional Control

With Plastic Body

Type 2030
with Positioner

Technical Data Positioner Type 1067

Electrical Data

Voltage supply:	24 VDC
Power consumption:	< 10 W
Signal input for positioner:	Unit signal: 4–20 mA 0–20 mA 0–10 V
Binary input:	Configurable as normally open or closed contact
Connection:	Terminal strip Cable gland 2 x PG 9

Pneumatic Data

Instrument air:	Filtered compressed air, lubricated or non-lubricated
Air performance	
Air inlet valve:	$C_v = .035$
Exhaust valve:	$C_v = .040$
Internal air consumption at steady-state condition:	Zero
Connection:	Female pipe thread, G 1/8"

Positioner Data

Overall dimensions:	5" x 3.2" x 3"
Body material:	Aluminum, lacquered
Fluid plate material:	Aluminum, anodized
Weight of positioner:	Approx. 2.2 lbs.
Rating:	NEMA 4
Operating temperature:	32°F to 140°F

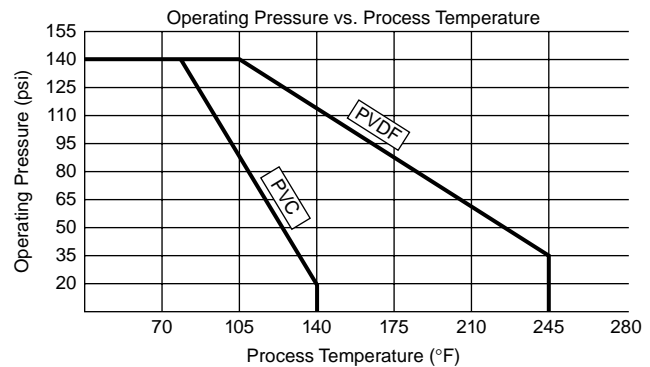
Technical Data Control Valve 2030

Valve

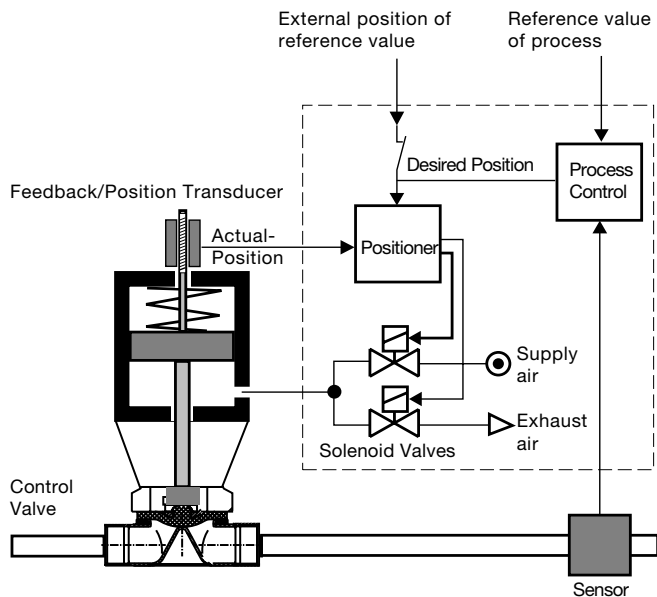
Size:	1/2", 3/4", 1", 1-1/4", 1-1/2", 2"
Control range:	More than 50:1
Flow features:	Modified equal percentage
Flow capacity:	See table page 4
Fluid temperature:	32°F to +140°F (PVC) 32°F to +245°F (PVDF)
Max. Operating pressure:	140 PSI (at ambient temperature)

Actuator

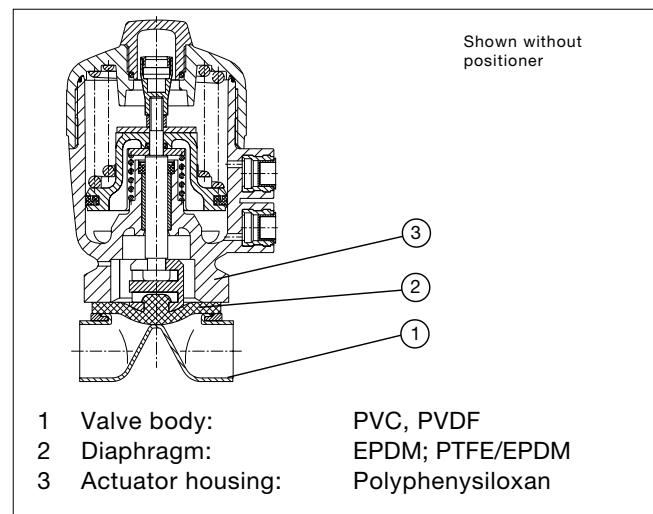
Actuator piston dia.:	See ordering chart, page 3
Supply pressure:	65 PSI, min. 85 PSI, max.
Function:	Normally closed



Functional Diagram



Material



Ordering Chart

Valve Size [inch]	Actuator-piston dia. [in.]	Max. operating pressure [psi]	Seal (Diaphragm)	Weight [lb.]	Item-No.	
					PVC True union	PVDF Fusion spigot
1/2	2.48	145	EPDM	4.4	US04800	— —
	2.48	85	PTFE/EPDM		US05050	425 824 E
3/4	3.15	145	EPDM	6.2	US05051	— —
	3.15	85	PTFE/EPDM		US05052	425 825 F
1	3.15	145	EPDM	6.4	US05053	— —
	3.15	85	PTFE/EPDM		US05054	425 866 Q
1-1/4	3.94	116	EPDM	9.7	US50E09	— —
	3.94	85	PTFE/EPDM		US05055	425 867 R
1-1/2	4.92	145	EPDM	14.1	US05056	— —
	4.92	85	PTFE/EPDM		US05057	425 868 S
2	4.92	116	EPDM	16.7	US05058	— —
	4.92	85	PTFE/EPDM		US05059	425 869 T

Easy Pressure Control
Flow Control
Temperature Control

Easy to calibrate

Automatic self-adjustment of basic parameters by fingertip control

Easy to install

Compact design

- Delivered pre-mounted, tested and ready to install
- Requires less space than conventional control valves

Easy to operate

- User-friendly operation
- LCD and key pad interface
 - Menu-guided programming
 - Programmable characteristic curves

Easy to operate



Burkert control valve with Burkert digital flow transmitter for proportional process control.

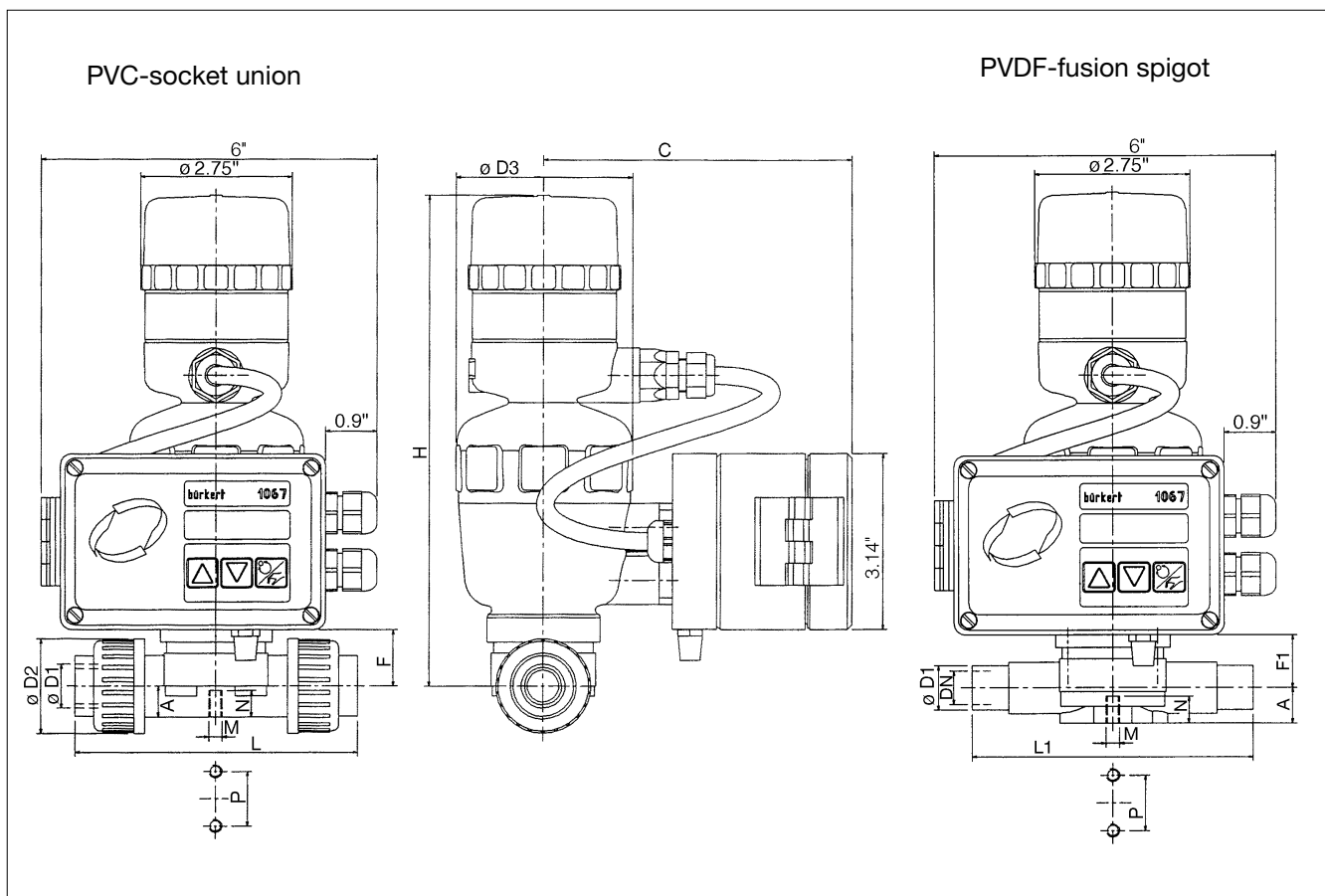


Burkert Link

Specifications - Flow Capacity

Plug travel [%]	C _v -value					
	1/2"	3/4"	1"	1-1/4"	1-1/2"	2"
0	0.00	0.00	0.00	0.00	0.00	0.00
10	0.00	0.00	0.00	0.00	0.35	0.00
20	0.06	0.20	0.20	0.20	4.45	10.05
30	0.60	3.60	1.30	1.50	9.35	22.80
40	1.50	5.30	4.35	6.30	18.00	34.30
50	2.00	6.70	7.00	10.65	23.65	40.40
60	2.60	7.35	8.90	14.40	27.60	43.20
70	3.05	7.85	11.00	17.30	30.20	46.35
80	3.40	8.30	12.65	19.65	30.90	49.85
90	3.75	8.40	13.20	21.40	31.35	51.25
100	3.85	8.55	13.80	21.90	31.80	53.00

Dimensions [inch]



Variable Dimensions [inch]

Valve Size	Actuator Piston Dia.	A	C	øD1	øD2	øD3	F	F1	H	L	L1	M	N	P
1/2	2.48	0.6	5.5	0.8	1.7	3.1	1.0	0.9	8.8	5.0	4.9	M6	0.5	1.0
3/4	3.15	0.7	5.8	1.0	2.1	4.0	1.7	1.6	10.1	6.0	5.7	M6	0.5	1.0
1	3.15	0.8	5.8	1.3	2.4	4.0	1.8	1.7	10.2	6.5	6.1	M6	0.5	1.0
1-1/4	3.94	1.0	6.3	1.6	2.9	5.0	2.4	2.4	11.9	7.6	6.9	M8	0.6	1.8
1-1/2	4.92	1.3	6.8	2.0	3.3	6.0	3.0	3.0	14.1	8.7	7.6	M8	0.6	1.8
2	4.92	1.5	6.8	2.5	4.1	6.0	3.3	3.3	14.4	10.5	8.8	M8	0.6	1.8

In case of special requirements please consult for advice.

We reserve the right to make technical changes without notice.

US_2030/1067_10/00