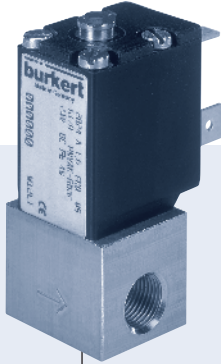
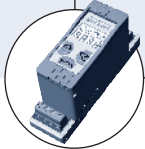


## 2/2-way proportional valve



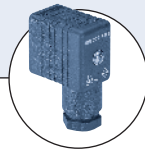
- General purpose
- 0 to 232 PSI<sup>1)</sup>
- DN 0.8 to 2.0 mm
- 1/8" or sub-base version

Type 2824 can be combined with...



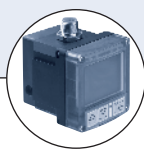
**Type 8605**

Digital control electronics  
DIN-rail version



**Type 2507**

Cable plug

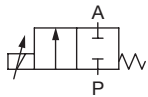


**Typ 8611**

Universal Controller

The direct-acting proportional valve Type 2824 can be used as a control valve for process control and is suitable for technical vacuum. Low hysteresis, high repeatability and high sensitivity ensure superior regulation behaviour. Thanks to an elastomeric sealing, the valve closes tightly and securely.

### Circuit function A



Direct acting 2-way  
proportional valve,  
normally closed

Valve control takes place through the control electronics of Type 8605, which converts an analogue input into a PWM signal<sup>2)</sup>.

Further functional features of the Type 8605 electronic control unit:

- Temperature compensation for coil heating by internal current regulation
- Simple zero and span settings
- Ramp function to dampen fast status changes

<sup>1)</sup> Pressure data [PSI]: Overpressure with respect to atmospheric pressure

<sup>2)</sup> PWM pulse-width modulation

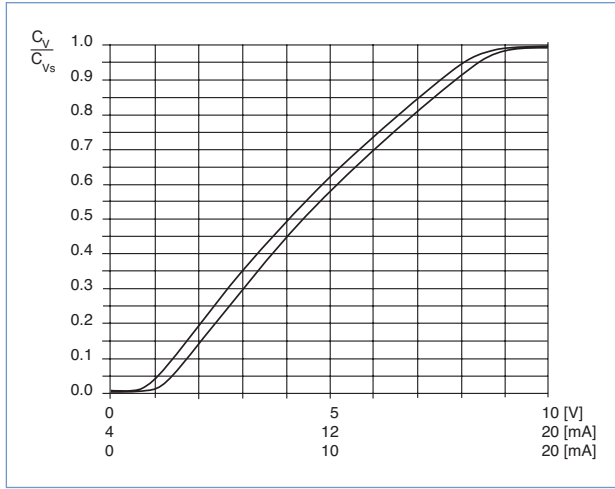
<sup>3)</sup> Characteristic data of control behaviour depends on process conditions

### Technical data - valve

<b>Body material</b>	Brass, Stainless steel
<b>Seal material</b>	FKM, EPDM on request
<b>Media</b>	Neutral gases, liquids
<b>Medium temperature</b>	14°F to 194°F (-10°C to +90°C)
<b>Ambient temperature</b>	max. 131°F (+55°C)
<b>Viscosity</b>	max. 21 cSt
<b>Operating voltage</b>	24 V DC
<b>Power consumption</b>	5 W
<b>Duty cycle</b>	100% continuously rated
<b>Port connection</b>	NPT 1/8, Sub-base, G 1/8, others on request
<b>Electric connection</b>	Cable plug Type 2507, Form B Industrial standard
<b>Installation</b>	As required, preferably with actuator in upright position
<b>Typical control data<sup>3)</sup></b>	
Hysteresis	< 5%
Repeatability	< 0.25% FS
Sensitivity	< 0.25% FS
Turn-down ratio	1:100
<b>Protection class - valve</b>	IP65

### Technical data - control electronics Type 8605 (see separate datasheet)

Characteristics of a proportional valve



Advice for valve sizing

In continuous flow applications, the choice of appropriate valve size is much more important than with on/off valves. The optimum size should be selected such that the resulting flow in the system is not unnecessarily reduced by the valve. However, a sufficient part of the pressure drop should be taken across the valve even when it is fully opened.

**Recommended value:  $\Delta p_{\text{valve}} > 30\%$  of total pressure drop within the system**

**For that reason take advantage of Bürkert competent engineering services during the planning phase!**

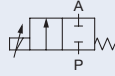
Determination of the  $C_v$  value

Pressure drops	$C_v$ value for liquids [GPM]	$C_v$ value for air and gasses [SCFM]
Subcritical ( $p_2 > p_1 \times .53$ )	$C_v = \frac{Q_L \sqrt{Sg}}{\sqrt{\Delta p}}$	$C_v = \frac{Q_g \sqrt{Sg}}{\sqrt{\Delta p \times p_2}}$
Supercritical ( $p_2 < p_1 \times .53$ )	$C_v = \frac{Q_L \sqrt{Sg}}{\sqrt{\Delta p}}$	$C_v = \frac{Q_g \times 2 \sqrt{Sg}}{p_1}$

- $C_v$  = Liquids – flow coefficient in GPM at 1 PSI  $\Delta p$   
Gasses – flow coefficient in SCFM for each PSIG of inlet pressure
- Sg = Specific gravity (Specific gravity of air and water @ 60°F= 1)
- $p_1$  = Inlet pressure in PSIA
- $p_2$  = Outlet pressure in PSIA
- $\Delta p$  = Differential pressure ( $p_1 - p_2$ )
- PSIA = Gauge pressure (PSIG) + 14.7
- $Q_L$  = Liquid flow in GPM
- $Q_g$  = Gas flow in SCFM

## Ordering chart (other versions on request)

### All valves with FKM sealing

Control function	Orifice [mm]	Port connection	C <sub>v</sub> value water [GPM] <sup>1)</sup>	Q <sub>Nn</sub> value [l/min] <sup>2)</sup>	Maximum pressure [PSI] <sup>3)</sup>	Coil power consumption [W]	Maximum coil current [mA]	Item no. Brass body	Item no. Stainless steel body
	0.8	sub-base FK01	0.021	19	174	5	210	175 660	175 677
		G 1/8	0.021	19	174	5	210	175 950	175 951
		NPT 1/8	0.021	19	174	5	210	175 952	175 953
	1.0	sub-base FK01	0.031	29	145	5	210	175 954	175 955
		G 1/8	0.031	29	145	5	210	175 956	175 957
		NPT 1/8	0.031	29	145	5	210	175 958	175 959
	1.2	sub-base FK01	0.044	41	116	5	210	175 960	175 961
		G 1/8	0.044	41	116	5	210	175 962	175 963
		NPT 1/8	0.044	41	116	5	210	175 964	175 965
	1.6	sub-base FK01	0.064	59	87	5	210	175 685	175 686
		G 1/8	0.064	59	87	5	210	175 687	175 688
		NPT 1/8	0.064	59	87	5	210	175 966	175 967
2.0	sub-base FK01	0.10	97	43.5	5	210	175 968	175 969	
	G 1/8	0.10	97	43.5	5	210	175 970	175 971	
	NPT 1/8	0.10	97	43.5	5	210	175 972	175 973	

<sup>1)</sup> C<sub>v</sub> value: Flow rate value for water, measured at 68°F (+20°C) and 1 PSI pressure differential over a fully opened valve.

<sup>2)</sup> Q<sub>Nn</sub> value: Flow rate value for air with inlet pressure of 87 PSI<sup>1)</sup>, 14.5 PSI pressure differential and 68°F (+20°C).

<sup>3)</sup> Pressure data [PSI]: Overpressure with respect to atmospheric pressure

Please note that the valves are delivered without control electronics unit and cable plug (see Accessory Ordering Information below).

### Further versions on request



#### Materials

Seal material FFKM - Resistant to aggressive media  
Seal material EPDM



#### Analytical

Oxygen version  
Part oil-, fat- and silicon free



#### Electrical connection

12 V Coil  
Cable coil 300mm

## Ordering chart for accessories

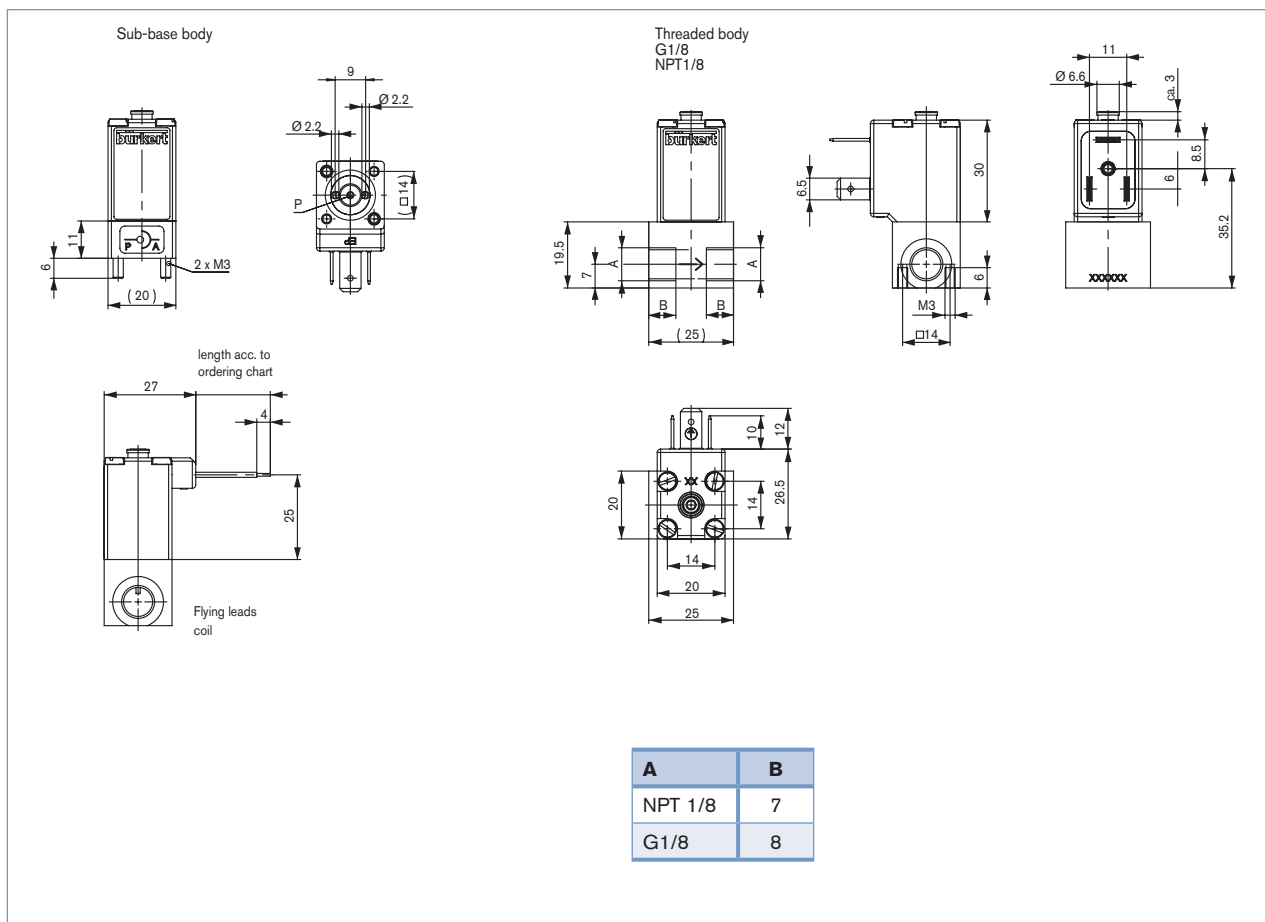
### Cable plug Type 2507, Form B Industrial standard

The delivery of a cable plug includes the flat seal and fixing screw

Voltage	Current rating	Item no.
Without circuitry		
0 ... 250 V AC/DC	max. 6 A	423 845

**Electronic Control Type 8605** - please see datasheet 8605

Dimensions [mm]



**Note**  
You can fill out the fields directly in the PDF file before printing out the form.

**Design data for proportional valves**

▶ Please fill out this form and send to your local Bürkert Sales Centre\* with your inquiry or order

Company	Contact person
Customer no.	Dept.
Address	Tel./Fax
Town / Postcode	E-Mail

= Mandatory fields       Quantity       Desired delivery date

**Process data**

**Medium**

**State of medium**       liquid       gaseous       vaporous

**Medium temperature**       °F

**Maximum flow rate**       $Q_{nom} =$        Unit:

**Minimum flow rate**       $Q_{min} =$        Unit:

**Inlet pressure at nominal operation**       $p_1 =$        PSIG

**Outlet pressure at nominal operation**       $p_2 =$        PSIG

**Maximum inlet pressure**       $p_{1max} =$        PSIG

**Ambient temperature**       °F

**Additional specifications**

**Body material**       Brass       Stainless steel

**Seal material**       FKM       other     

**Note** Please state all pressure values as **overpressures with** respect to atmospheric [PSIG].

DTS 1000104093 EN Version: - Status: RL (released | freigegeben | validé) printed: 10.07.2008