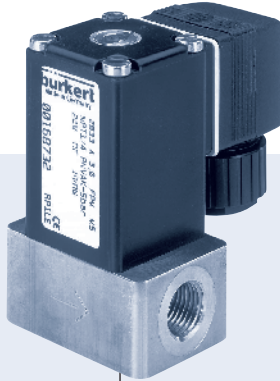


2/2-way proportional valve

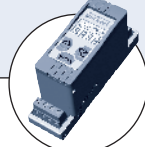


Type 2833 can be combined with...



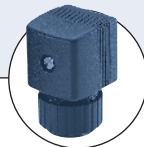
Type 8605

Digital control electronics
Cable plug version



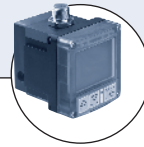
Type 8605

Digital control electronics
DIN-rail version



Type 2508

Cable plug



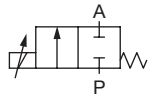
Type 8611

Universal controller

- High sensitivity
- 0 ... 232 PSI¹⁾
- DN 0.8 ... 4 mm orifices
- 1/8", 1/4" or sub-base
- EEx approvals optional

The direct-acting proportional valve Type 2833 can be used as a control valve for process control and is suitable for technical vacuum. Low hysteresis, high repeatability and high sensitivity ensure superior regulation behaviour. Thanks to an elastomeric sealing, the valve closes tightly and securely.

Circuit function A



Direct acting 2-way
proportional valve,
normally closed

Valve control takes place through the control electronics of Type 8605, which converts an analogue input signal into a PWM signal²⁾.

Further, functional features of the Type 8605 electronic control unit:

- Temperature compensation for coil heating by internal current regulation
- Simple zero and span settings
- Ramp function to dampen fast status changes

¹⁾ Pressure data [PSI]: Overpressure with respect to atmospheric pressure

²⁾ PWM pulse-width modulation

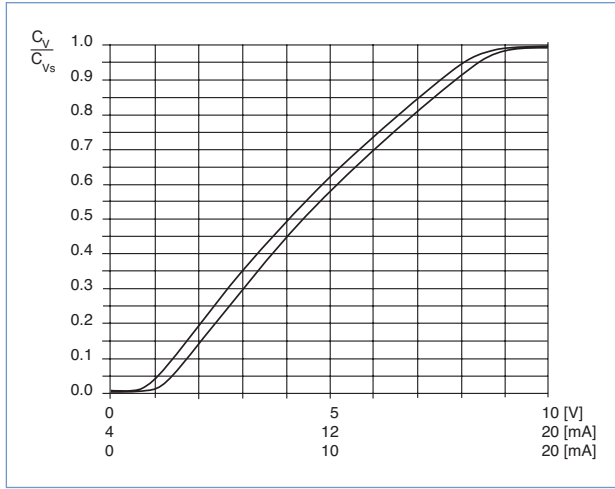
³⁾ Characteristic data of control behaviour depends on process conditions

Technical Data - valve

Body material	Brass, Stainless steel
Seal material	FKM, EPDM on request
Media	Neutral gases, liquids
Medium temperature	14°F up to 194°F (-10°C up to +90°C)
Ambient temperature	max. 131°F (+55°C)
Viscosity	max. 21 cSt
Operating voltage	24 V DC
Power consumption	9 W
Duty cycle	100% continuously rated
Port connection	NPT 1/8, NPT 1/4, Sub-base, G 1/8, G 1/4, others on request
Electric connection	Cable plug Type 2508 acc. to DIN EN 175301-803 Form A
Installation	As required, preferably with actuator in upright position
Response time (10 - 90%)	< 20ms
Typical control data ³⁾	
Hysteresis	< 5 %
Repeatability	< 0.5 % FS.
Sensitivity	< 0.25 % FS
Turn-down ratio	1:100
Protection class - valve	IP65

Technical data - control electronics Type 8605 (see separate datasheet)

Characteristics of a proportional valve



Advice for valve sizing

In continuous flow applications, the choice of appropriate valve size is much more important than with on/off valves. The optimum size should be selected such that the resulting flow in the system is not unnecessarily reduced by the valve. However, a sufficient part of the pressure drop should be taken across the valve even when it is fully opened.

Recommended value: $\Delta p_{\text{valve}} > 30\%$ of total pressure drop within the system

For that reason take advantage of Bürkert competent engineering services during the planning phase!

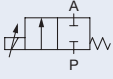
Determination of the C_v value

Pressure drops	C_v value for liquids [GPM]	C_v value for air and gasses [SCFM]
Subcritical ($p_2 > p_1 \times .53$)	$C_v = \frac{Q_L \sqrt{Sg}}{\sqrt{\Delta p}}$	$C_v = \frac{Q_g \sqrt{Sg}}{\sqrt{\Delta p \times p_2}}$
Supercritical ($p_2 < p_1 \times .53$)	$C_v = \frac{Q_L \sqrt{Sg}}{\sqrt{\Delta p}}$	$C_v = \frac{Q_g \times 2 \sqrt{Sg}}{p_1}$

- C_v = Liquids – flow coefficient in GPM at 1 PSI Δp
Gasses – flow coefficient in SCFM for each PSIG of inlet pressure
- Sg = Specific gravity (Specific gravity of air and water @ 60°F= 1)
- p_1 = Inlet pressure in PSIA
- p_2 = Outlet pressure in PSIA
- Δp = Differential pressure ($p_1 - p_2$)
- PSIA = Gauge pressure (PSIG) + 14.7
- Q_L = Liquid flow in GPM
- Q_g = Gas flow in SCFM

Ordering chart

All valves with FKM seal

Control function	Orifice [mm]	Port connection	C _v value water [gpm] ¹⁾	QNn value [l/min] ²⁾	Maximum pressure [PSI] ³⁾	Coil power consumption [W]	Maximum coil current [mA]	Item no. Brass body	Item no. Stainless steel body
	0.8	sub-base FB01	0.02106	19	232	9	400	175 860	175 861
		G 1/8	0.02106	19	232	9	400	175 862	175 863
		NPT 1/8	0.02106	19	232	9	400	175 864	175 865
	1.2	sub-base FB01	0.0468	43	174	9	400	175 866	175 867
		G 1/8	0.0468	43	174	9	400	175 868	175 869
		NPT 1/8	0.0468	43	174	9	400	175 870	175 871
	1.5	sub-base FB01	0.0702	65	145	9	400	175 872	175 873
		G 1/8	0.0702	65	145	9	400	175 874	175 875
		NPT 1/8	0.0702	65	145	9	400	175 876	175 877
	2.0	sub-base FB01	0.117	108	116	9	400	175 878	175 879
		G 1/8	0.117	108	116	9	400	175 880	175 891
		NPT 1/8	0.117	108	116	9	400	175 892	175 893
		G 1/4	0.117	108	116	9	400	175 896	175 900
	2.5	NPT 1/4	0.117	108	116	9	400	175 901	175 902
		sub-base FB01	0.1755	162	72.5	9	400	175 922	175 923
		G 1/4	0.1755	162	72.5	9	400	175 924	175 926
3.0	NPT 1/4	0.1755	162	72.5	9	400	175 927	175 928	
	sub-base FK01	0.2574	237	50.75	9	400	175 929	175 930	
	G 1/4	0.2574	237	50.75	9	400	175 932	175 933	
4.0	NPT 1/4	0.2574	237	50.75	9	400	175 938	175 939	
	sub-base FK01	0.3744	345	29	9	400	175 940	175 941	
	G 1/4	0.3744	345	29	9	400	175 942	175 943	
		NPT 1/4	0.3744	345	29	9	175 944	175 945	

¹⁾ C_v value: Flow rate value for water, measured at 68°F and 1 PSI pressure differential over a fully opened valve.

²⁾ QNn value: Flow rate value for air with inlet pressure of 87 PSI¹⁾, 14.5 PSI pressure differential and 68°F.

³⁾ Pressure data [PSI]: Overpressure with respect to atmospheric pressure

Please note that the valves are delivered without control electronics unit and cable plug (see Accessory Ordering Information).

Further versions on request



Materials

Seal material FFKM - Resistant to aggressive media
Seal material EPDM



Analytical

Oxygen version
Part oil-, fat- and silicon free



Electrical connection

12 V Coil



Approvals

Ex version - II 2G EEx m IIC T4, PTB No. 02 ATEX 2094X with or without terminal box

Ordering chart for accessories

Cable plug Type 2508 according to DIN EN 175301-803 Form A

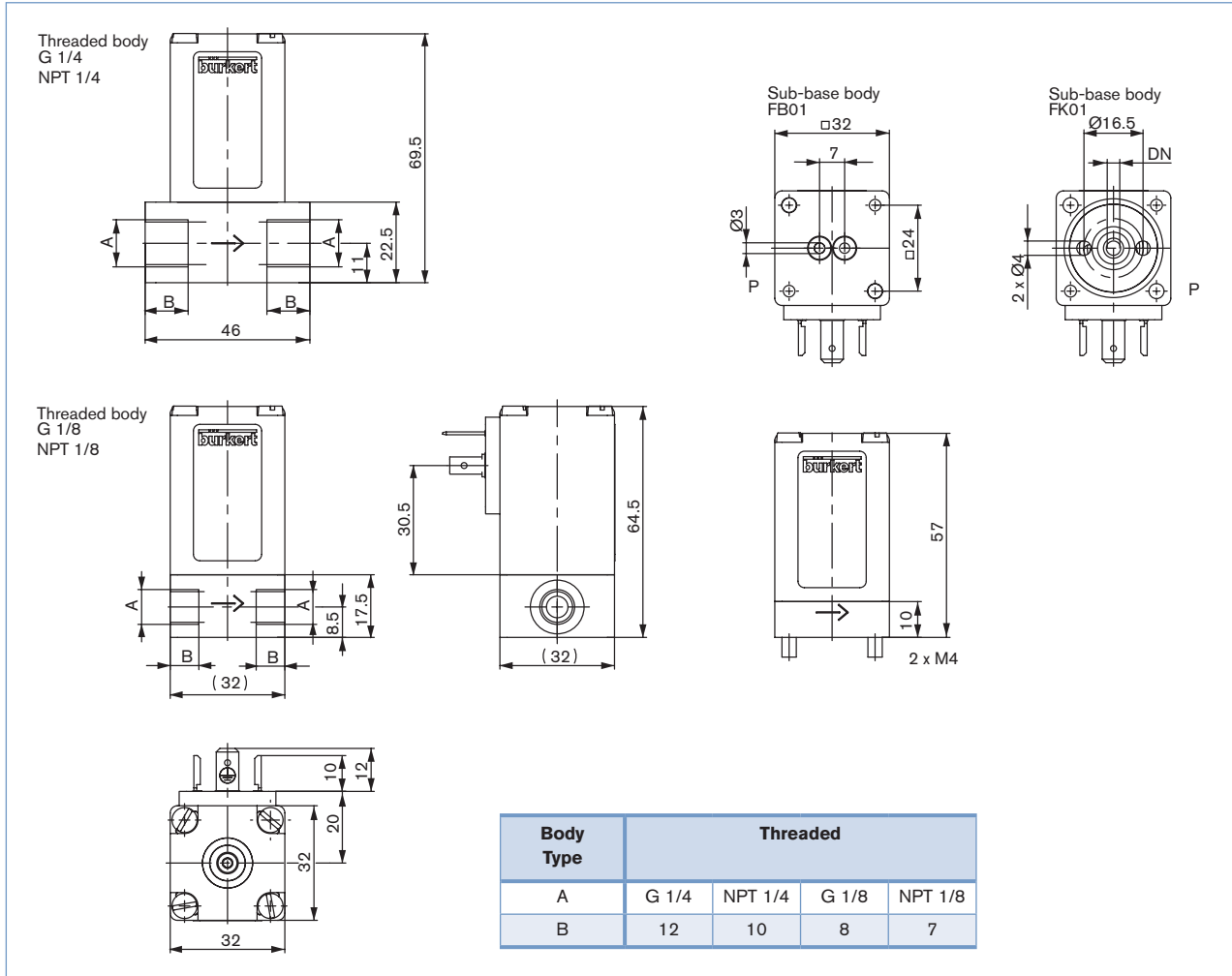
The delivery of a cable plug includes the flat seal and fixing screw

Circuitry	Voltage / frequency	Item no.
None	0 - 250 V AC/DC	008 376
None, with 3 m cable	0 - 250 V AC/DC	783 573

Electronic Control Type 8605

Please see Datasheet

Dimensions [mm]



For product inquiries, use the specification sheet for proportional valves!

Note
You can fill out the fields directly in the PDF file before printing out the form.

Design data for proportional valves

▶ Please fill out this form and send to your local Bürkert Sales Centre* with your inquiry or order

Company	Contact person
Customer no.	Dept.
Address	Tel./Fax
Town / Postcode	E-Mail

= Mandatory fields Quantity Desired delivery date

Process data

Medium

State of medium liquid gaseous vaporous

Medium temperature °F

Maximum flow rate $Q_{nom} =$ Unit:

Minimum flow rate $Q_{min} =$ Unit:

Inlet pressure at nominal operation $p_1 =$ PSIG

Outlet pressure at nominal operation $p_2 =$ PSIG

Maximum inlet pressure $p_{1max} =$ PSIG

Ambient temperature °F

Additional specifications

Body material Brass Stainless steel

Seal material FKM other

Note Please state all pressure values as **overpressures with** respect to atmospheric [PSIG].

DTS 1000099414 EN Version: A Status: RL (released | freigegeben | validé) printed: 10.07.2008