



WEIHENSTEPHAN & ATN GMBH

Good beer is not a coincidence

State-of-the-art automation technology for the pilot brewery of
Weihenstephan's research centre

We make ideas flow.

bürkert
FLUID CONTROL SYSTEMS

REPRODUCIBLE RECIPES

COOPERATION WITH ATN GMBH AND THE WEIHENSTEPHAN RESEARCH CENTRE

The pilot brewery of Weihenstephan's research centre for brewery and food quality has been modernised. Automated flowmeters, process control valves, solenoid valves, pneumatic actuators and "smart" valve islands make manual adjustments unnecessary. This not only saves time, but also enables monitoring of the recipes developed or tested here possible at any time. The control system is kept so simple that the master brewer can create, operate and modify recipes from a PC using an Excel spreadsheet.



Did you know?

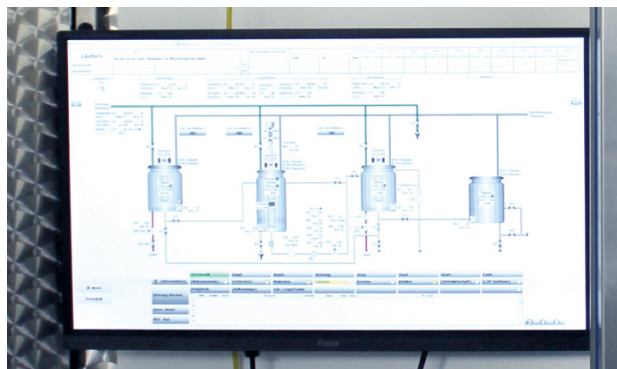
The flowmeter FLOWave* works in accordance with the patented SAW method without any sensor elements in the measuring tube. This ensures the strictest hygienic requirements are met.

Where beer is reinvented every day

The pilot brewery of Weihenstephan's research centre for brewery and food quality enables the creation of pilot brews for all kinds of beer, fermented malt drinks and mixtures. Pilot brews are prepared both in the name of research and on the basis of orders, ultimately resulting in drinks for consumption. This process starts with the mashing, brewing and fermentation processes through to the testing of suitable yeasts, microorganisms, ripening processes and filtration capabilities.

The desire for greater process quality

The pilot brewery has an output of 50 litres of wort and a capacity of nine fermentation tanks capable of holding 60 litres each. Beyond that, the brewhouse and the lautering process of the "mini brewery" are no different from those of a larger facility. "Until now, most things were adjusted manually," explains the Weihenstephan research centre. This applied to the control valves in the water intake for mashing and sparging, to the control valves for the lautered wort and to the pump used to drain the wort tank or to adjust the height of the rake arms. "There wasn't even any scaling here and the rake motor always ran at the same speed," they said at the research centre, reflecting back.



A clearly arranged visualisation enables simple operation of the system, even with frequently changing users, like here in a university

To achieve a better basis for future research work, those responsible at the research centre decided it was time to modernise the plant automation. However, the decision-makers felt it was important to be able to intervene in the system at any time, even after its modernisation.

We save so much time now. During the lautering process, which takes around two hours, it is no longer necessary for any of us to stand next to the machine to operate the pump at regular intervals.

From control valve to flowmeter

However, a process control alone does not make automation possible; since automatic control valves, flowmeters and pneumatic actuators are required to automate existing manual valves. The fluidic system expert Bürkert supplied and installed the required hardware for the fluidic systems, handled the installation of the wiring and hoses, and supported start-up. The range of applied fluidic components covers the process control valve used for the steam needed to heat the mashing and wort tank, the temperature controller on the wort cooler, various flowmeters and a valve island mounted in the control cabinet that is used to control all of the valves installed in the process. The height of the rake arms of the lautertun is now also adjusted automatically using a solenoid valve. The existing flap valves were overhauled and equipped with pneumatic actuators. Furthermore, there is also a brewing water storage tank in which the water can be precisely blended using a modular blending unit.

Valve island as an automation system

The entire pneumatic system is controlled by a valve island. This is directly installed and shipped in a stainless steel, hygienically designed control cabinet with the stainless steel control AirLINE Quick base plate to save space. "The stainless steel control cabinet is well suited to our small pilot brewery. All of the valves also have a P-channel shut-off mechanism, which means they can be switched out even while the machine is in operation without shutting it down," claims the Weihenstephan research centre.

A worthwhile investment

For the pilot brewery, the investment in cutting-edge auto-mation technology has paid off. A high degree of repro-ducibility and traceability is simple with this so-lution, as data acquisition is integrated into the control system. Product-specific information can be displayed graphically along with other measured values. Thanks to the fruitful partnership, the system was prepared for start-up quickly and easily. "The training time was also short, because all those responsible quickly got used to the Excel spread-sheet system," concludes the research centre.



AirLINE Quick allows the use of components in the control cabinet to be reduced significantly. Less pneumatic hoses and cables are required.

How you benefit

from Bürkert solutions for future-proof automation technology:



Robust process reliability

The proven and future-proof components enable reliable and repro-ducible processes.



Time saving:

Automation of the process steps saves the pilot brewery a considerable amount of time, which can be invested in other activities.



Perfect interaction:

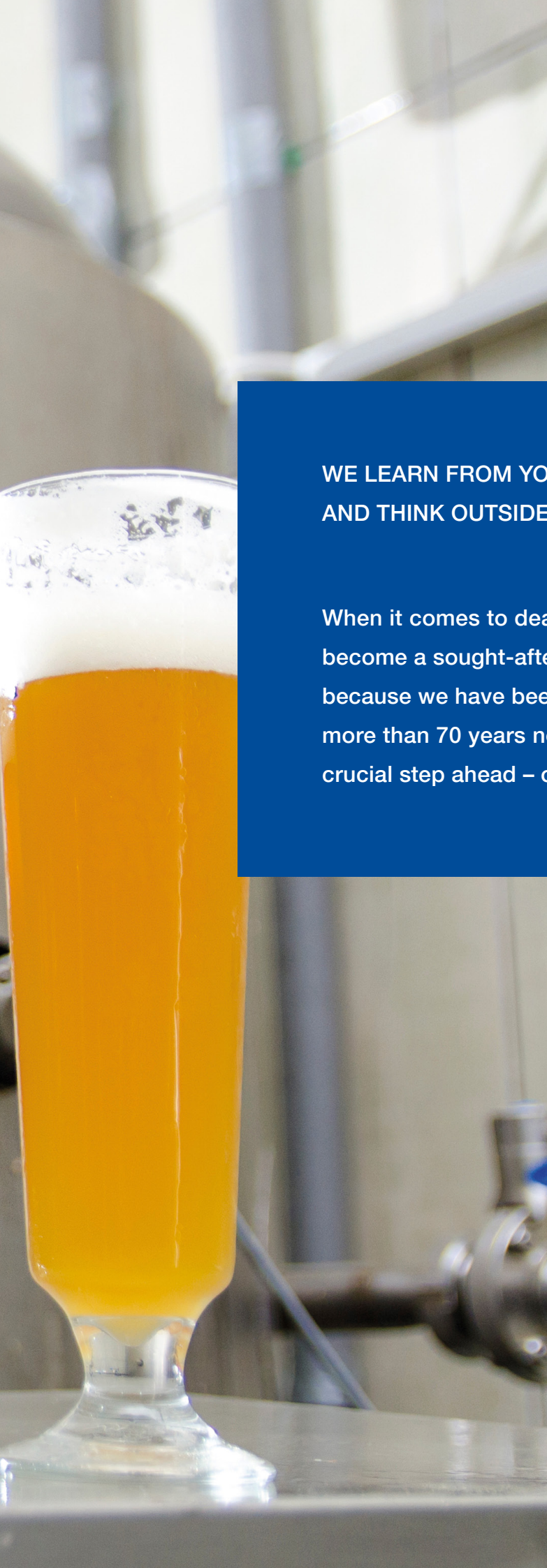
Well-coordinated components guarantee reliable operation of the brewing process.



Easy start-up:

Thanks to the excellent cooperation between all those involved, start-up went very smoothly indeed.





**WE LEARN FROM YOU EVERY DAY –
AND THINK OUTSIDE THE BOX.**

When it comes to dealing with liquids and gases, Bürkert has become a sought-after partner all over the world. Why? Probably because we have been learning for and from our customers for more than 70 years now. This enables us to always think that crucial step ahead – or even sideways.

You can find out more about this project at:
www.buerkert.com

Bürkert Fluid Control Systems

Christian-Bürkert-Straße 13-17

74653 Ingelfingen

Germany

Phone +49 7940 100

info@buerkert.de

www.buerkert.com

We make ideas flow.

**bürkert**
FLUID CONTROL SYSTEMS